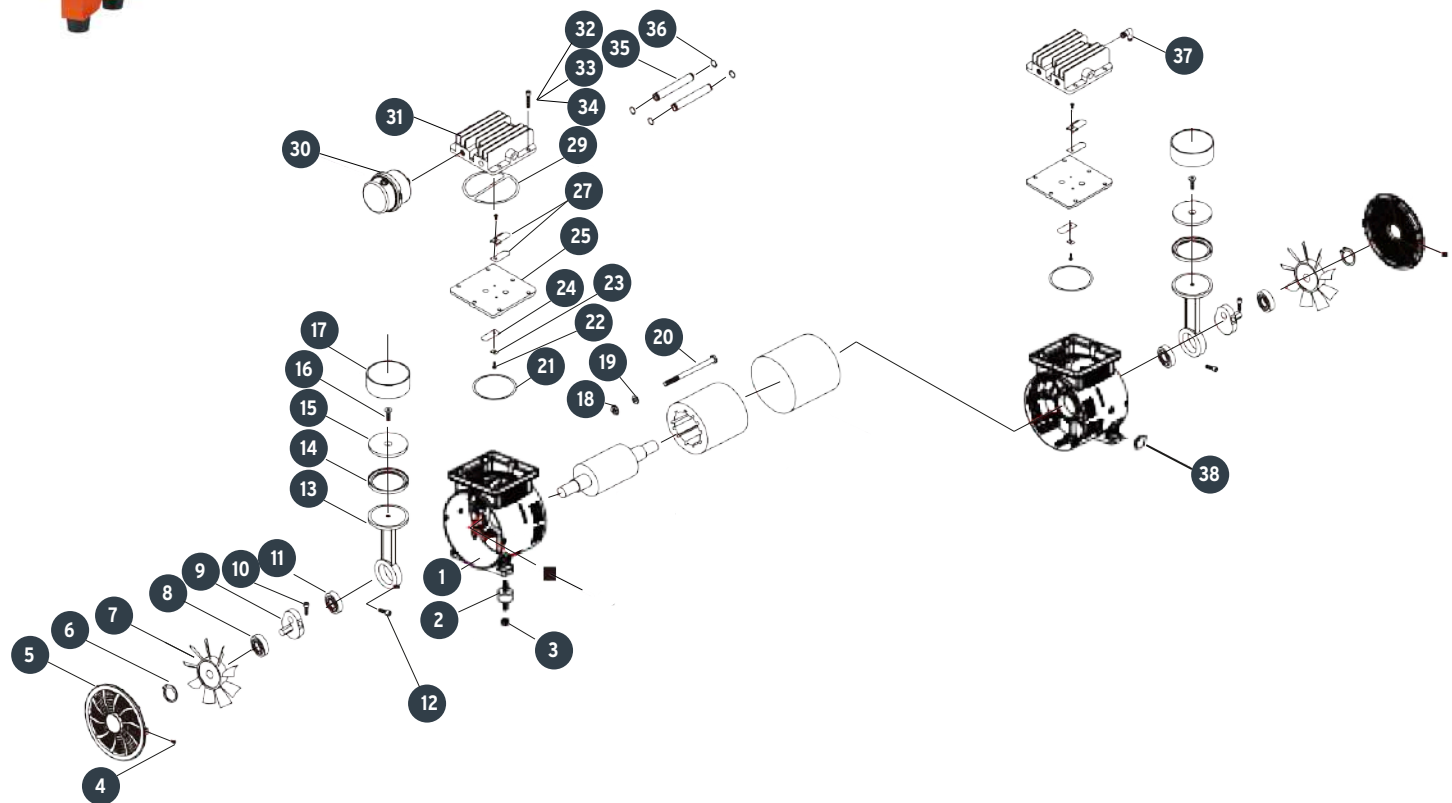


A

A

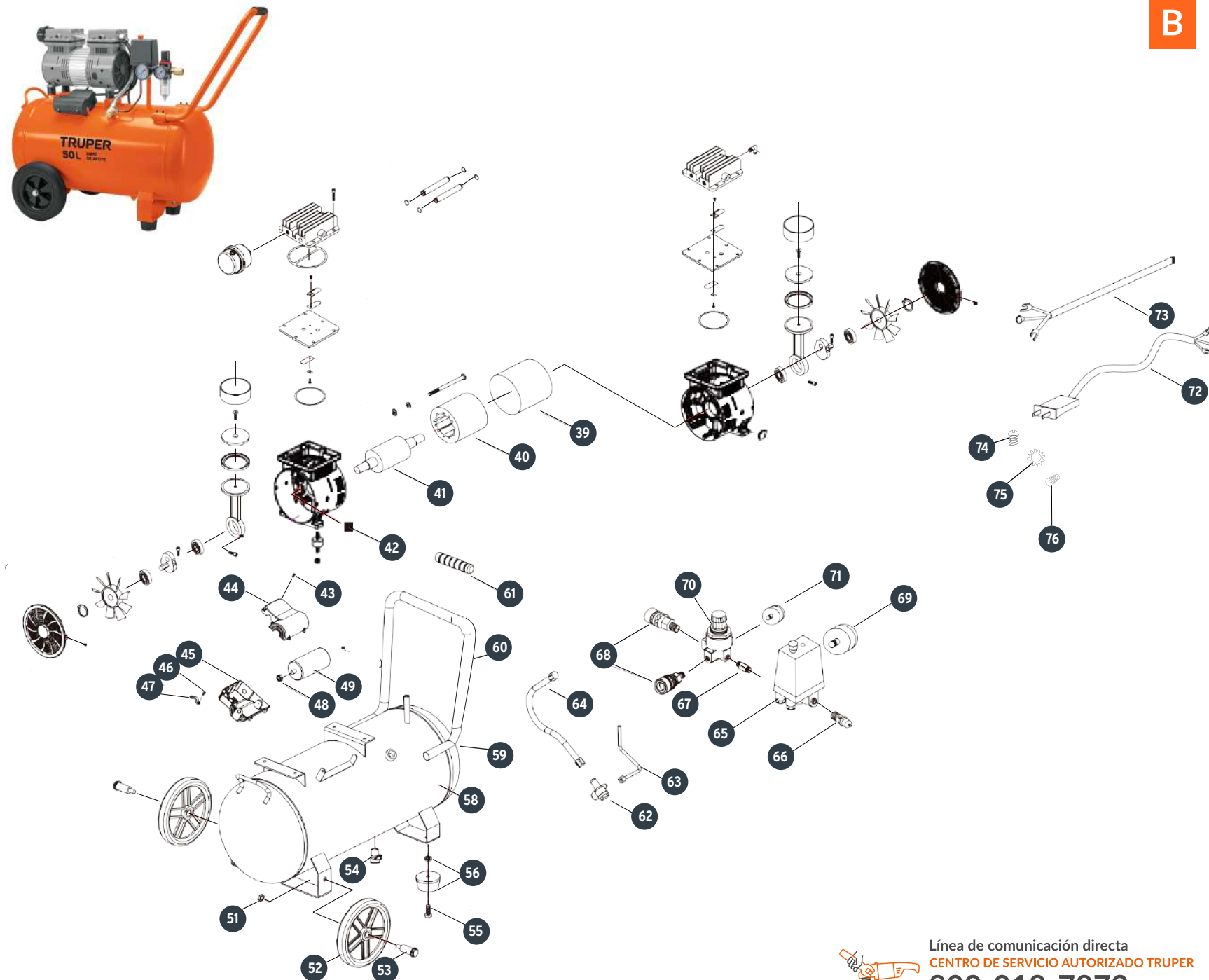


| No. | Código | Clave | Descripción |
|-----|--------|--------------|-----------------------------|
| 1 | 954829 | R1-COMP-50Q | Cárter de compresor |
| 2 | 954830 | R2-COMP-50Q | Almohadilla |
| 3 | 954831 | R3-COMP-50Q | Tuerca M6 |
| 4 | 954832 | R4-COMP-50Q | Tornillo M3.5x10 |
| 5 | 954833 | R5-COMP-50Q | Cubierta protectora |
| 6 | 954834 | R6-COMP-50Q | Seguro tipo "C" Ø11x14x1 |
| 7 | 954835 | R7-COMP-50Q | Ventilador |
| 8 | 954836 | R8-COMP-50Q | Balero 6006 |
| 9 | 954837 | R9-COMP-50Q | Leva |
| 10 | 954838 | R10-COMP-50Q | Opresor Allen M8x12 |
| 11 | 954839 | R11-COMP-50Q | Balero 6203 |
| 12 | 954840 | R12-COMP-50Q | Tornillo Allen M6x16 |
| 13 | 954841 | R13-COMP-50Q | Biela |
| 14 | 954842 | R14-COMP-50Q | Sello del pistón |
| 15 | 954843 | R15-COMP-50Q | Copa de biela |
| 16 | 954844 | R16-COMP-50Q | Tornillo Allen M6x18 |
| 17 | 954845 | R17-COMP-50Q | Cilindro 63.7x69x25.5 |
| 18 | 954846 | R18-COMP-50Q | Tuerca M5 |
| 19 | 954847 | R19-COMP-50Q | Arandela de presión Ø5.5 |
| 20 | 954848 | R20-COMP-50Q | Tornillo M5x157 |
| 21 | 954849 | R21-COMP-50Q | Sello Ø63x69x3 |
| 22 | 954850 | R22-COMP-50Q | Tornillo M4x6 |
| 23 | 954851 | R23-COMP-50Q | Limite de válvula |
| 24 | 954852 | R24-COMP-50Q | Hoja de válvula |
| 25 | 954853 | R25-COMP-50Q | Plato de válvula |
| 27 | 954854 | R27-COMP-50Q | Bloque limitado |
| 29 | 954855 | R29-COMP-50Q | Sello |
| 30 | ACC | | Ensamble de filtro de aire |
| 31 | 954856 | R31-COMP-50Q | Cabeza de cilindro |
| 32 | 954857 | R32-COMP-50Q | Tornillo Allen M5x24 |
| 33 | 954858 | R33-COMP-50Q | Arandela de presión Ø5.3 |
| 34 | 954859 | R34-COMP-50Q | Arandela Plana Ø5x10x1 |
| 35 | 954860 | R35-COMP-50Q | Tubería de conexión 12.8x81 |
| 36 | 954861 | R36-COMP-50Q | Sello Ø9.5x13.5x2 |
| 37 | 954862 | R37-COMP-50Q | Codo |
| 38 | 954863 | R38-COMP-50Q | Conector |



B

| No. | Código | Clave | Descripción |
|-----|--------|--------------|------------------------------------|
| 39 | 954864 | R39-COMP-50Q | Manga de motor |
| 40 | 954865 | R40-COMP-50Q | Ensamble de campo |
| 41 | 954866 | R41-COMP-50Q | Rotor |
| 42 | 954867 | R42-COMP-50Q | Sujetador de cable |
| 43 | 954868 | R43-COMP-50Q | Tornillo M4x12 |
| 44 | 954869 | R44-COMP-50Q | Caja de capacitor superior |
| 45 | 954870 | R45-COMP-50Q | Base de capacitor |
| 46 | 954871 | R46-COMP-50Q | Tornillo M3x12 |
| 47 | 954872 | R47-COMP-50Q | Opresor de cable |
| 48 | 954873 | R48-COMP-50Q | Tuerca M8 |
| 49 | 954874 | R49-COMP-50Q | Capacitor 65µF |
| 51 | ACC | | Tuerca M10 |
| 52 | ACC | | Rueda Ø190mm |
| 53 | ACC | | Tornillo M10x50 |
| 54 | 954875 | R54-COMP-50Q | Válvula de drenado |
| 55 | ACC | | Tornillo hexagonal M8x20 |
| 56 | ACC | | Pata soporte |
| 58 | 954876 | R58-COMP-50Q | Tanque |
| 59 | 954877 | R59-COMP-50Q | Opresor M6 |
| 60 | 954878 | R60-COMP-50Q | Manubrio |
| 61 | 954879 | R61-COMP-50Q | Cubierta de manubrio |
| 62 | 954880 | R62-COMP-50Q | Válvula de retención |
| 63 | 954881 | R63-COMP-50Q | Ensamble de tubería de descarga |
| 64 | 954882 | R64-COMP-50Q | Tubo de escape |
| 65 | ACC | | Presostato |
| 66 | ACC | | Válvula de seguridad |
| 67 | 954883 | R67-COMP-50Q | Niple |
| 68 | ACC | | Acople rápido |
| 69 | ACC | | Manómetro de presostato |
| 70 | ACC | | Regulador de presión |
| 71 | ACC | | Manómetro de la válvula reguladora |
| 72 | 954884 | R72-COMP-50Q | Cable de alimentación |
| 73 | 954885 | R73-COMP-50Q | Cable eléctrico |
| 74 | 954886 | R74-COMP-50Q | Tornillo M5x6 |
| 75 | 954887 | R75-COMP-50Q | Arandela Ø5 |
| 76 | 954888 | R76-COMP-50Q | Capuchón |



B