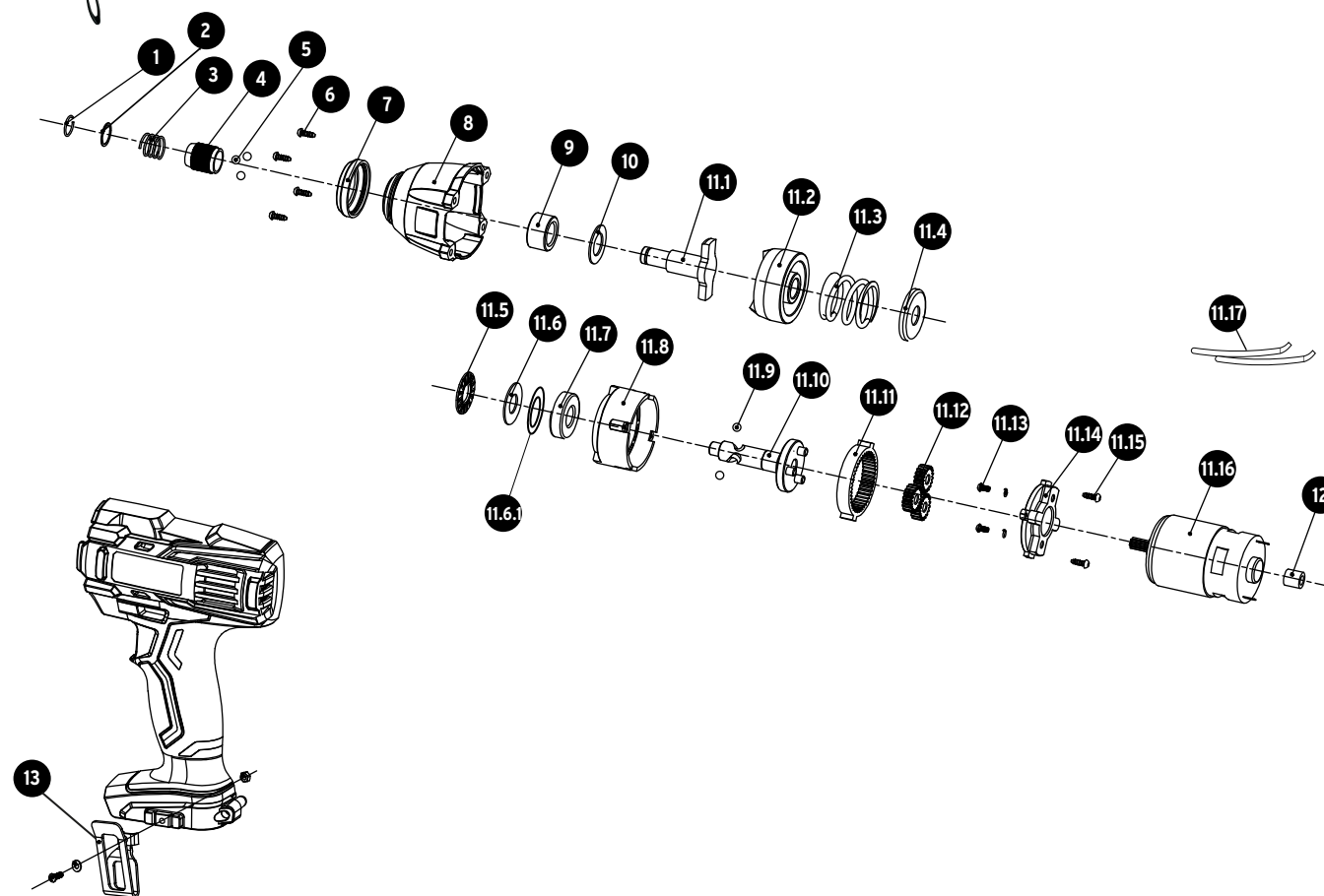


A

No.	Código	Clave	Descripción
1	956168	R1-DIMI-20P	Seguro C (Diam11X13X1)
2	956169	R2-DIMI-20P	Arandela plana (Diam12X15X1)
3	956170	R3-DIMI-20P	Resorte porta broquero
4	956171	R4-DIMI-20P	Barril
5	956172	R5-DIMI-20P	Balín (Diam 3.5)
6	956173	R6-DIMI-20P	Tornillo (ST3.8X16)
7	956174	R7-DIMI-20P	Funda de goma para la caja de engranes
8	956175	R8-DIMI-20P	Caja de engranes
9	956176	R9-DIMI-20P	Casquillo del eje (Diam13,5X21,5X12)
10	956177	R10-DIMI-20P	Arandela plana (Diam14X24X1)
11.1	956178	R11.1-DIMI-20P	Yunque
11.2	956179	R11.2-DIMI-20P	Bloque de impacto
11.3	956180	R11.3-DIMI-20P	Resorte
11.4	956181	R11.4-DIMI-20P	Arandela especial
11.5	956182	R11.5-DIMI-20P	Balero de agujas (Diam12X26X2)
11.6	956183	R11.6-DIMI-20P	Arandela plana (Diam12X26X1)
11.6.1	956184	R11.6.1-DIMI-20P	Arandela plana (Diam12X15X.5)
11.7	956185	R11.7-DIMI-20P	Balero de bolas (6001)
11.8	956186	R11.8-DIMI-20P	Cubierta de engranes
11.9	956187	R11.9-DIMI-20P	Balín (Diam5.5)
11.10	956188	R11.10-DIMI-20P	Flecha porta engranes
11.11	956189	R11.11-DIMI-20P	Cremallera de engranes
11.12	956190	R11.12-DIMI-20P	Engrane
11.13	956191	R11.13-DIMI-20P	Tornillo (M4X10)
11.14	956192	R11.14-DIMI-20P	Fijador de motor
11.15	956193	R11.15-DIMI-20P	Tornillo (ST2.5X10)
11.16	956194	R11.16-DIMI-20P	Motor
11.17	956195	R11.17-DIMI-20P	Arnés del motor
12	956196	R12-DIMI-20P	Inductancia (5X10X10)
13	ACC		Hebilla para cinturón



A



B

No.	Código	Clave	Descripción
14	956197	R14-DIMI-20P	Tornillo (ST3X12)
15	956198	R15-DIMI-20P	Protector del LED
16	956199	R16-DIMI-20P	Luz LED
17	956200	R17-DIMI-20P	Cambio de giro
18	956201	R18-DIMI-20P	Interruptor
19	956202	R19-DIMI-20P	Arnés de la batería
20	956203	R20-DIMI-20P	Conector de batería
23	956204	R23-DIMI-20P	Carcasa izquierda y derecha
24	956205	R24-DIMI-20P	Tornillo (3X12)
25	ACC		Cargador

B

